

Wi-Fi Smart Thermostatic Radiator Valve



- ✓ Automatic debugging function, suitable for all kinds of mainstream valves
- ✓ The device supports Wi-Fi fast distribution network, no additional gateway is required
- ✓ Intelligent PID algorithm, efficient control of valve opening and closing, energy saving and environmental protection
- ✓ The motor adopts ultra-quiet technology to minimize noise pollution
- ✓ The device has activated the automatic conversion of summer time and winter time, which can be activated or terminated as needed

Technical specifications

Power Supply:	3 x 1.5 V alkaline AA batteries (not included)
Protection Degree:	IP20
Ambient Temperature:	0-50°C
Surface Temperature:	90°C Max (at the radiator)
Connection:	M30 x 1.5mm
Linear Travel:	4.3mm
Dimensions(W x H x D):	58.4mm x 97mm x 58.4mm
Weight:	210 g



1. Standard accessories

TRV			User Manual		
For Danfoss RA valves	For Danfoss RAV valves	For Danfoss RAVL valves	For Caleffi valves	For Giacomini valves	For M28 valves
Adapters					

4. Temperature control mode

Temperature control mode

Press the middle button to switch between Auto mode and Manual mode.

*** Attention:** Only Manual mode is available when the device is not connected to Internet.

• Auto mode

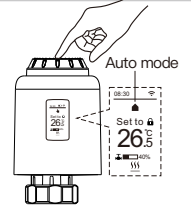
When "☀️ 🌙 🌧️" is displayed on the screen, it is under Auto mode. Four time periods and setting temperature could be programmed per day, one week as a cycle, based on customized needs.

• Manual mode

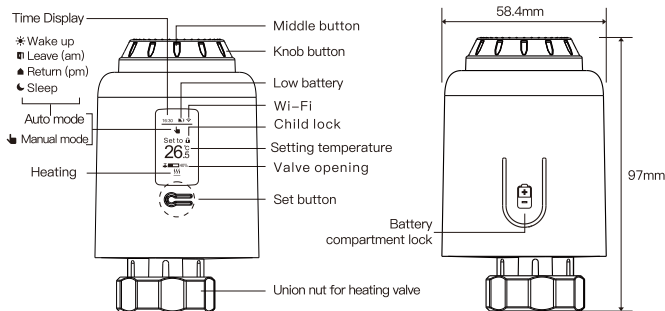
When "🔒" is displayed on the screen, it is under Manual mode. The device will work according to current setting temperature, without controlled by the time period program.

• Temporary mode

When setting temperature under Auto mode, the device enters Temporary mode, and then "🕒" appears on the screen. The device is switched to Manual mode temporarily, without controlled by the time period program. It will return to Auto mode by next time period.



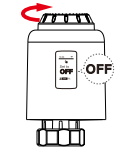
2. Display Symbols



5. Stop heating and pause heating

• **ON:** In summer, rotate the knob clockwise until "ON" is displayed under manual mode to stop heating. At this time, the heating valve is fully open. This can extend the use life of valve.

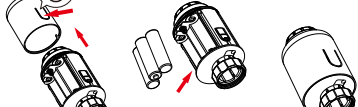
• **OFF:** In winter, rotate the knob counter-clockwise until "OFF" is displayed under manual mode to pause heating temporarily. At this time, the heating valve is closed and the frost protection is activated.



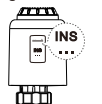
***Attention:** After the antifreeze function is activated, the valve will open when the room temperature is lower than 5°C, and the valve will be closed when the room temperature exceeds 7°C to prevent damage to the radiator thermostatic valve due to freezing

3. Installation

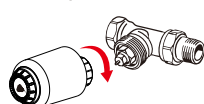
① Press the battery compartment lock, remove the cover, and insert the batteries.



② Initialize, the mandrel pulls back, then "INS" is displayed on the screen, and dots blink to show the progress.



③ When the dots "INS" stop blinking, install the TRV union nut with M30*1.5 thread for heating valve, and then tighten the nut.

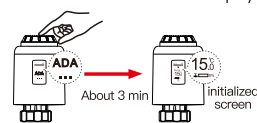


*Attention:

While inserting the batteries, please make sure the polarity of battery (+/-) is aligned.



④ Press the middle button and then "ADA" start blinking, the device enter valve-adjusting process. After several minutes, the process is completed when initialized interface is displayed.



How to install the adapter correctly

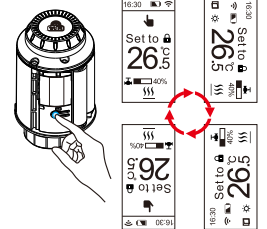
For Danfoss RA valves 	For Danfoss RAV valves 	For Danfoss RAVL valves
For Caleffi valves 	For Giacomini valves 	For M28 valves
	H13mm	H4.8mm
	H8.6mm	H11mm

6. Adjust setting temperature and Screen rotation

• **Adjust setting temperature:** Rotate the knob to adjust setting temperature, stepping by 0.5°C.



• **Screen rotation:** Long press the Set Button for 3 seconds to switch the screen 4 directions available.



7. Open-window function and Anti-scale

• **Open-window function:** First, enter the APP home page to turn on the window detection function, the device will automatically identify whether the window is open. When it is detected that there is cold wind, and the temperature drops by more than 1.5°C within 4.5 min, the open-window function will be activated. At this time, the screen displays "🌬️", and the temperature is set to 12°C.





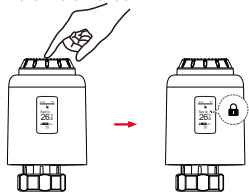
• **Anti-scale:** TRV executes routine decalcification every Monday at 12:00 to protect the valve from calcification. "CAL" will be displayed on the screen during decalcification.



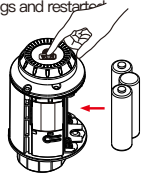
***Attention:** While the open-window function is activated, following operations will terminate it from taking effect. ① Temperature setting operation on the APP or device. ② The detected temperature rises by more than 1.5°C within 4.5 minutes. ③ No operation on the APP or device within 30 minutes.

8. Child lock function and Restore factory settings

• **Child lock function:** Long press the middle button for 3 seconds until “” is displayed on the screen to activate the child lock. While the device is locked, long press middle button for 3 seconds until “” disappear to deactivate the child lock.

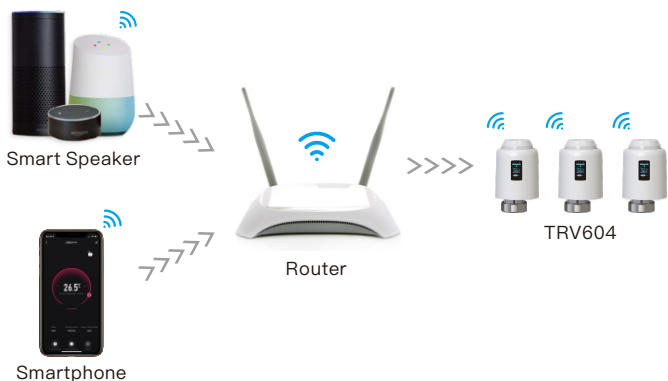


• **Restore factory settings:** Long press the middle button and insert the battery at the same time until “**FAC**” is displayed on the screen and blinking for 3 seconds, the device will be restored to factory settings and restart.

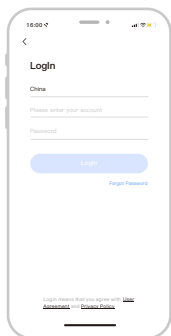


***Attention:** Once the device is restored to factory settings, all previous settings can not be recovered.

9. APP remote control and voice control




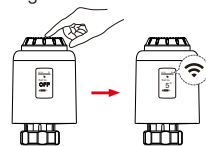
10. Download Smart Life APP





Scan the QR code above or search “Smart Life” on App Store and Google Play to download the Smart Life APP.

11. Add device

① Under manual mode, rotate the knob counterclockwise until “**OFF**” is displayed. Then long press the middle button for 3 seconds until “” is blinking.



② Enter the “**Home**” interface of the APP, click “” in the upper right corner, select the “**Add**” button in the pop-up window, and finally click “” to enter the Wi-Fi password interface;



***Attention:** Network configuration can only be done under manual mode. Please turn on the Bluetooth of your phone in advance.


③ Select 2.4G Wi-Fi and enter the password, click “**Next**”, and then wait for the connection to succeed;

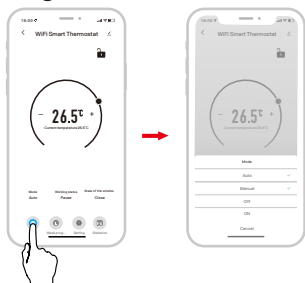


④ After the addition is successful, click “**Next**”, and the wifi smart thermostat has been added successfully.



12. Mode selection

• Click “” to select mode.



***Attention:** Click “” or “” to adjust the setting temperature.


Auto mode: Four time periods and setting temp. could be programmed per day, one week as a cycle, based on customized needs.

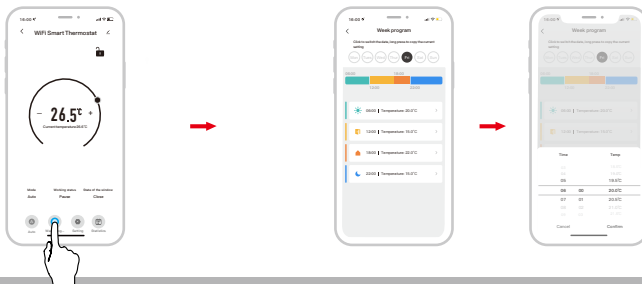
Manual mode: The device will work according to current setting temp. without controlled by the time period program.

Off mode: The valve will be closed to stop heating.


ON mode: The valve will open in heating.

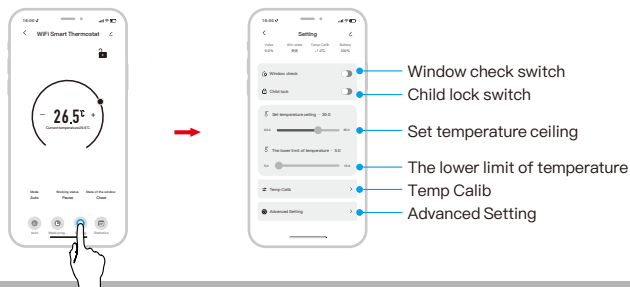
13. Week program setting

① Click “” to enter the week program setting page. ② Set four time periods and setting temperature based on customized needs.



14. Advanced setting

• Click “” to enter the advanced setting page.



15. Statistics

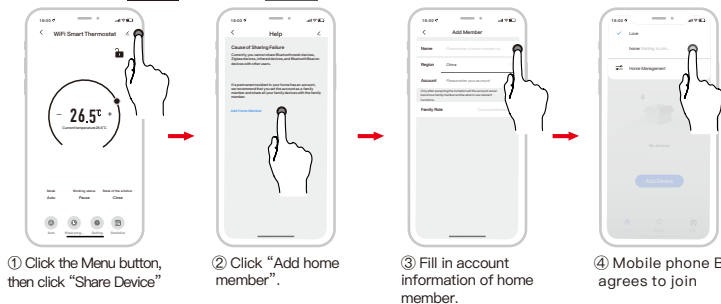
• Click “” to enter the Temperature Statistics.



16. Device sharing function

• Share the device to other family members, allowing them to remotely control the TRV device.

* Example of mobile **phone A** sharing mobile **phone B**



17. Voice control

• After waking up the speaker, you can say:

Amazon Alexa : Alexa,

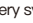
- * Set the DEVICENAME to 26 degree
- * Drop the DEVICENAME by 1 degree
- * Raise the DEVICENAME by 1 degree
- * Make the DEVICENAME warmer
- * Turn on the DEVICENAME child lock
- * Turn off the DEVICENAME child lock
- * What temperature is the DEVICENAME set to
- * What is battery on the DEVICENAME

Google Assistant : OK google,

- * Set the DEVICENAME to 23 degree
- * Turn on the DEVICENAME child lock
- * Turn off the DEVICENAME child lock
- * IS my DEVICENAME child lock on?
- * Turn on child lock for the DEVICENAME
- * Turn off child lock for the DEVICENAME
- * Set the DEVICENAME to auto
- * Set the DEVICENAME to manual

***Attention:** “DEVICENAME” is the device name, you can also name it yourself. The temperature unit of TRV and smart speaker must be identical.

18. Troubleshooting and maintenance

Error code	Problem	Solution
F0	Temperature sensor abnormality	Contact after-sales staff
F1	Slow valve operation	Check the installation and heating valve
F2	The stroke is too long	Check the fastening of TRV
F3	The stroke is too short	Check the heating valve
F4	Running out of battery	Replace batteries immediately
Battery symbol ()	Low battery	Replace batteries within 4 weeks